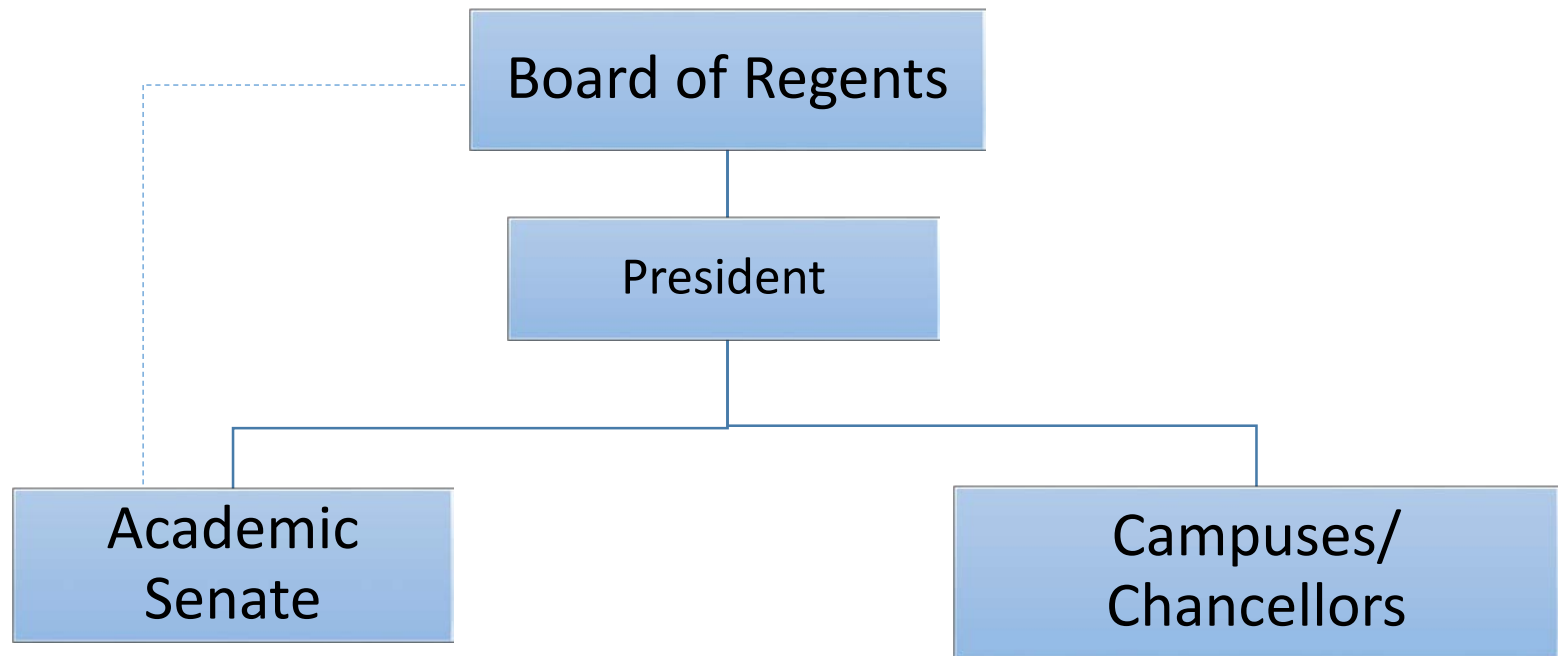
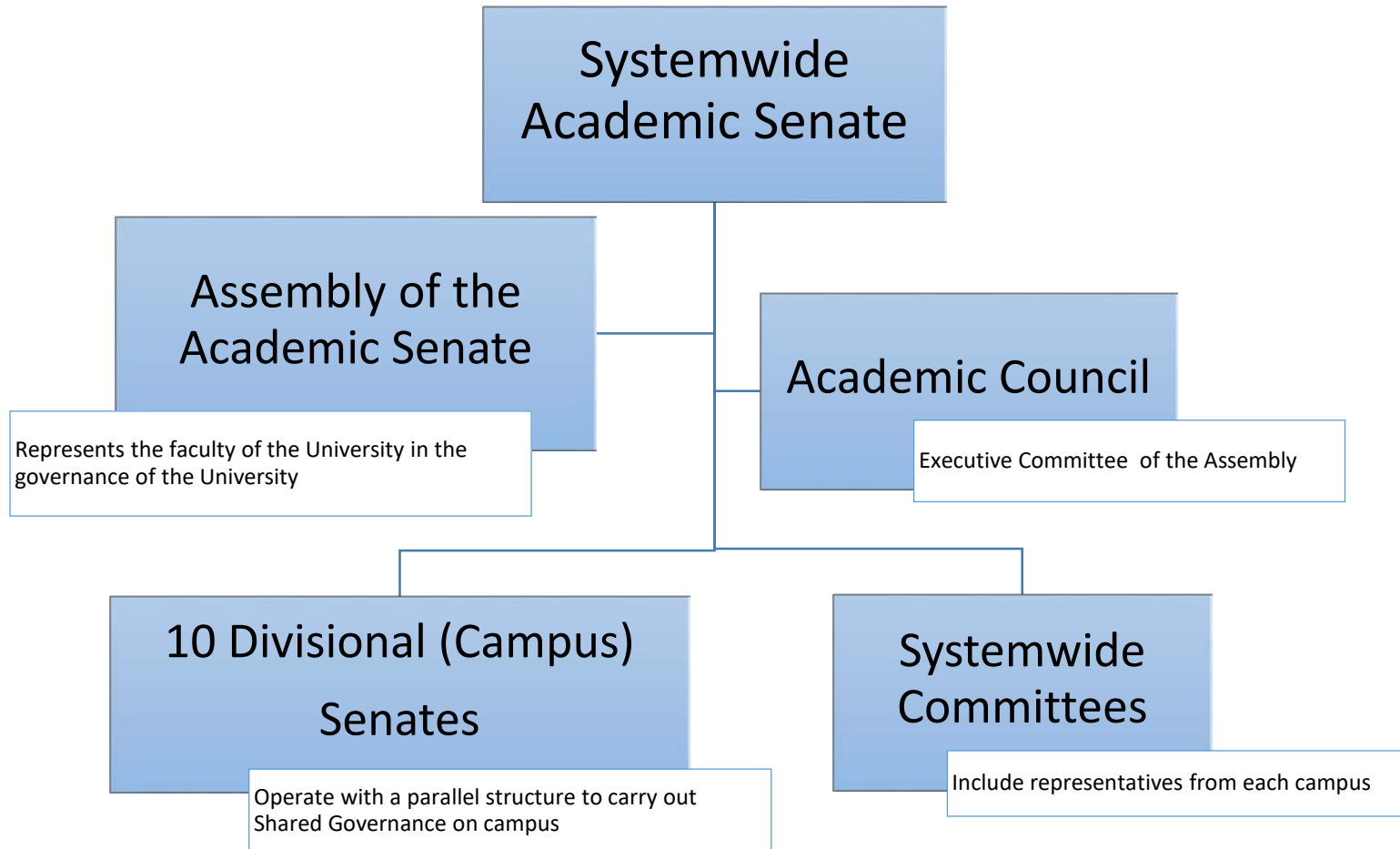


# Shared Governance

Shared governance is one of the distinctive features of the University of California.



# Overview of Shared Governance



# Organization of the Academic Senate

## Assembly of the Academic Senate

The Assembly of the Academic Senate is the highest authority in the University of California Academic Senate.

Academic Assembly Membership (60): President of the University; Chair & Vice Chair of the Assembly; Chairs of the ten campus Senate Divisions; Chairs of 8 UC Systemwide Committees: Educational Policy; Academic Personnel; Faculty Welfare; Graduate Affairs; Planning & Budget; BOARS; Research Policy; Affirmative Action, Diversity and Equity; and 40 Divisional Representatives, apportioned across the divisions based on an annual census of Senate faculty.

## Academic Council

The Academic Council is the executive committee and administrative arm of the Assembly of the Academic Senate and acts in lieu of the Assembly on non-legislative matters. It meets monthly.

Academic Council Membership (20): Chair & Vice Chair of the Academic Council; Chairs of the ten Senate Divisions; and Chairs of 8 Systemwide Committees listed above.

## Each UC campus is a Senate Division

- Berkeley
- Davis
- Irvine
- Los Angeles
- Merced
- Riverside
- San Diego
- San Francisco
- Santa Barbara
- Santa Cruz

The Chair of each Division is a member of the Academic Council.

## UC Systemwide Standing Committees

- Academic Freedom (UCAF)
- Academic Personnel (UCAP)
- Affirmative Action, Diversity & Equity (UCAADE)
- Board of Admissions & Relations with Schools (BOARS)
- Committees UCOC)
- Academic Computing & Communication (UCACC)
- Editorial (EDIT)
- International Education (UCIE)
- Educational Policy (UCEP)
- Faculty Welfare (UCFW)
- Coordinating Committee on Graduate Affairs (CCGA)
- Library & Scholarly Communication (UCOLASC)
- Planning & Budget (UCPB)
- Privilege & Tenure (UCPT)
- Research Policy (UCORP)
- Rules & Jurisdiction (UCRJ)
- Preparatory Education (UCOPE)