



OFFICE OF THE PROVOST AND  
EXECUTIVE VICE PRESIDENT FOR ACADEMIC AFFAIRS

OFFICE OF THE PRESIDENT  
1111 Franklin Street, 12<sup>th</sup> Floor  
Oakland, California 94607-5200

October 31, 2016

CHANCELLORS  
ACADEMIC SENATE CHAIR CHALFANT  
PRESIDENT'S ADVISORY GROUP

Dear Colleagues:

I am writing to request your facilitation of review of a proposed revised policy that would incorporate *Regents Policy 3104: Principles Underlying the Determination of Fees for Students of Professional Degree Programs* into a revision of *Regents Policy 3103: Policy on Professional Degree Supplemental Tuition*. The proposed revision has been prepared by the PDST (Professional Degree Supplemental Tuition) Work Group, which the University formed in early summer 2016 to consider issues related to PDST, including the policy governing PDST and the process through which campuses establish and adjust PDST charges. The Work Group has extensively reviewed and built upon the work of a systemwide PDST Task Force that was in operation 2012-14. PDST Work Group members are identified in an attachment.

Consideration of a proposed revision of PDST policy is currently slated for the March 2017 meeting of the Board of Regents. Due to the timeline to prepare materials for the Regents meetings, comments on the current draft should be submitted no later than **January 20, 2017**. It may not be possible to consider feedback submitted later than January 20. Written feedback should be sent to Coordinator Kate Glassman ([Kate.Glassman@ucop.edu](mailto:Kate.Glassman@ucop.edu)) and copied to Interim Associate Vice President David Alcocer ([David.Alcocer@ucop.edu](mailto:David.Alcocer@ucop.edu)).

I am sending this request to those whom the PDST Work Group believes will need to be active in this review. A description of the plan for soliciting feedback is attached for your reference. Should you identify others who should be involved, please invite them to participate. Attached are a model communication and six other items that should be made available as the proposed policy revision is considered.

If you have any questions, please do not hesitate to contact me, Interim Associate Vice President Alcocer, other members of the Work Group, or Coordinator Glassman. Thank you in advance for your assistance in facilitating this consultation period.

Cordially,

Aimée Dorr, Provost  
Executive Vice President for Academic Affairs

Attachments:

- October 31, 2016 letter from Provost Dorr requesting facilitation of review of proposed revision to *Regents Policy 3103: Policy on Professional Degree Supplemental Tuition*
- Model communication
- Briefing on Proposed Revision of Regents Policies Addressing Professional Degree Supplemental Tuition
- Proposed revised *Regents Policy 3103: Policy on Professional Degree Supplemental Tuition* (note that a redline version is not included, due to the number and nature of proposed revisions)
- Current *Regents Policy 3103: Policy on Professional Degree Supplemental Tuition*. (<http://regents.universityofcalifornia.edu/governance/policies/3103.html>.)
- Current *Regents Policy 3104: Principles Underlying the Determination of Fees for Students of Professional Degree Programs* (<http://regents.universityofcalifornia.edu/governance/policies/3104.html/>.)
- Overview of PDST Programs
- PDST Work Group Members and Plan for Soliciting Feedback on Proposed Revised PDST Policy

Briefing on Proposed Revision of Regents Policies  
Addressing Professional Degree Supplemental Tuition  
October 10, 2016

Currently there are two Regents policies that directly address Professional Degree Supplemental Tuition:

1. Regents Policy 3103: POLICY ON PROFESSIONAL DEGREE SUPPLEMENTAL TUITION
2. Regents Policy 3104: PRINCIPLES UNDERLYING THE DETERMINATION OF FEES FOR STUDENTS OF PROFESSIONAL DEGREE PROGRAMS

It is proposed that (a) the two policies be combined and revised as Regents Policy 3103, (b) Regents Policy 3104 be rescinded, and (c) these proposed actions be considered for approval at the March 2017 meeting of the Regents.

The policy revision is intended to achieve the following:

- a. Reaffirm the principles guiding the PDST, viz. excellence, access, inclusion, and affordability
- b. Increase the predictability of PDST levels from year to year
- c. Support “right sizing” of the PDST levels from year to year
- d. Engage Regents in meaningful consideration of PDST levels for each graduate professional degree program charging the PDST
- e. Establish policy that works well without resorting to frequent approvals of exceptions to policy
- f. Focus on policy, not implementation
- g. Assign policy implementation to the UC Provost
- h. Establish policy and its implementation that are both effective and efficient for the campuses, the Office of the President, and the Regents

Elements of Regents Policy 3103 and Regents Policy 3104 that are retained in the proposed policy revision include the following:

- a. Guiding principles of excellence, access, inclusion, and affordability
- b. Development of a multi-year plan for each program charging the PDST
- c. Various details about PDSTs (i.e., same graduate professional degree programs (e.g., MBA) at different campuses may have different PDSTs, new and increased PDST income shall not result in corresponding decline in State support for the professional school of the PDST program)
- d. Use of comparable graduate professional degree programs at other public and private institutions to analyze costs and performance of UC program
- e. Required consultation with campus students, faculty, and academic leaders
- f. Responsibilities of the campuses and the UC Office of the President for creating sound multi-year plans

Elements of Regents Policy 3103 and Regents Policy 3104 that are different in the proposed policy revision include the following:

- a. Regental approval of a multi-year plan for each graduate professional degree program charging the PDST
- b. Understanding that approval of the multi-year plan confers automatic approval for a PDST level for each year of the plan that is no higher than that in the approved plan
- c. Emphasis on using several perspectives to provide a strong rationale for the PDST levels proposed in the multi-year plan
- d. Absence of any fixed cap on the PDST level or PDST increase
- e. Use of the percent increase in cost of living as a benchmark but not a cap for the maximum annual increase for a PDST

Concerns that have been considered as the proposed policy revision was developed include the following:

- a. Potential high PDST levels due to absence of a firm cap
- b. Adequate degree of pressure to keep the PDST low
- c. PDST level in relation to cost of living around each campus
- d. Consideration of private, as well as public, comparators
- e. Adequate opportunities for students to consult about the PDST level and state of the degree program
- f. Possibility of accurately predicting needed PDST level over a multi-year period
- g. Adequate transparency with respect to uses of PDST funds
- h. Adequate evidence that the graduate professional degree program charging a PDST is performing well with respect to excellence, access, inclusion, and affordability
- i. Burdensome review and approval process for members of the Regents Committee on Academic and Student Affairs
- j. Potential for further withdrawal of state funds for the degree program

Processes used to develop the proposed policy revision include the following:

- a. Extensive review and use of the work of a 2012-14 PDST Task Force

The Task Force was created at the request of the Student Regent. There were 19 members (6 students in PDST programs including the Student Regent, 4 faculty including the Academic Senate Chair and CCGA representative, and 6 academic administrators and 3 staff all very familiar with PDSTs). It was co-chaired by the UC Provost and a graduate student in a PDST program. The Task Force met often. It produced a proposed new policy and new set of Policy Implementation Protocols; both were submitted to 90-day systemwide review. The policy revision was generally acceptable to the UC community; the Policy Implementation Protocols were not and there was no obvious revision to address concerns. Many found them overly restrictive and burdensome and some worried they did not go far enough in regulating PDST levels and involving students in decision making. With the arrival of President Napolitano and her expectation that our processes would become less not more burdensome, Task Force members agreed to make what changes we could and consolidate the record so that it could be useful in the future. A “final draft” policy was prepared, student consultation and reporting of it were increased, and some more information was required to complete the annual requests for any changes in the PDST level.

- b. Compilation of previously expressed opinions

In various meetings with organized groups and consultations with some of their members PDSTs have been discussed. These include the Regents, including the Student Regents, the Academic Council, the Coordinating Committee on Graduate Affairs, UCSA, the Council of Student Body Presidents, the Executive Vice Chancellors/Provosts, and Health Sciences Deans. An informal compilation of opinions was prepared based on the recollections of various UCOP staff and their notes from the meetings and consultations.

- c. Creation of a 2016 PDST Work Group

The Work Group has 8 members (Systemwide Academic Senate Chair, Student Regent, Executive Director for Student Services and Deputy to the Vice President for Student Affairs (OP), Graduate Studies Director (OP), Associate Vice President UC Health (OP), Coordinator UC Health (OP), Director Operating Budget (OP), and the Provost (OP). It meets weekly. Members have reviewed material from (a) and (b) above, and they have generated their own additional suggestions for policy revisions. The “final draft” policy from the 2012-14 Task Force was used as the starting point for creation of the proposed policy revision that will be taken to the Regents.

- d. Consultation on the proposed policy revision

As of October 10, the 2016 PDST Work Group members have consulted with Council of Chancellors, Council of Vice Chancellors (COVC), Council of Vice Chancellors for Planning and Budget (COVCPB), Council of Graduate Deans (COGD), and Council of Vice Chancellors for Student Affairs (COVCSA). Dorr has had preliminary conversations with the Chair and Vice Chair of the Regents Committee on Academic and Student Affairs, the committee to which the item would be assigned.

- e. A formal 90-day review will be undertaken, and final revisions to the proposed policy will be informed by the feedback received from the review.

**Proposed Revised PDST Policy  
October 18, 2016**

**Regents Policy 3103: POLICY ON PROFESSIONAL DEGREE SUPPLEMENTAL  
TUITION**

**Combined with**

**Regents Policy 3104: PRINCIPLES UNDERLYING THE DETERMINATION OF FEES  
FOR STUDENTS OF PROFESSIONAL DEGREE PROGRAMS**

1. Professional Degree Supplemental Tuition (PDST) shall be assessed to students enrolled in designated graduate professional degree programs in order to achieve and maintain excellence in the preparation of students for professional careers and effectively advance the mission and strategic academic plan of the graduate professional degree program charging a PDST.
2. Access and inclusion are among the University's core commitments, and affordability is a vitally important component of a public education system. Any initiation of, or increase in, PDST shall be justified by the programmatic and financial needs of the graduate professional degree programs and must be considered in the context of the University's commitment to access, inclusion, and affordability.
  - a. The University is committed to ensuring the inclusion of diverse populations in its programs, including its graduate professional degree programs. In keeping with this commitment, each program proposing to charge PDST shall describe comprehensive strategies for the inclusion of diverse populations, consistent with Regents Policy 4400 (Policy on University of California Diversity Statement).
  - b. Financial aid targeted for students enrolled in graduate professional degree programs is necessary to ensure access to the degree programs, to minimize financial barriers to the pursuit of lower-paying public interest careers, and to reduce restrictions on students' career options due to student debt. Each program proposing to charge PDST shall complement its proposed PDST plans with financial aid measures, such as scholarships, grants, and loan repayment assistance programs, to meet these goals adequately. Financial aid sources should be supplemented by an amount equivalent to at least 33 percent of new Professional Degree Supplemental Tuition revenue or by an amount necessary to ensure that financial aid sources are equivalent to at least 33 percent of all Professional Degree Supplemental Tuition revenue.
3. The President or his/her designee is responsible for ensuring that graduate professional degree programs engage in appropriate multi-year planning of PDST levels within the context of principles and goals expressed in this policy and do so in consultation with graduate students, faculty, and program and administrative leadership.

4. Each multi-year plan for charging a PDST shall be prepared by the campus, endorsed by the Chancellor, reviewed by the Provost, and recommended to the Regents by the President. Each multi-year plan requires approval by the Regents in order to be implemented.
  - a. The Provost shall establish the format for the submittal of a multi-year plan that effectively addresses the requirements of this policy. At a minimum, the multi-year plan shall address the following topics:
    - i. nature and purpose of the graduate professional degree program charging the PDST,
    - ii. proposed PDST level for each year of the plan,
    - iii. uses of the PDST funds,
    - iv. contributions of the PDST funds to the excellence of the degree program,
    - v. strategies for ensuring access, inclusion, and affordability,
    - vi. identification of the program's set of public and private comparators,
    - vii. analysis of the graduate professional degree program in relation to its comparators,
    - viii. assessment of the graduate professional degree program's performance with respect to quality, access, inclusion, and affordability, and
    - ix. consultation with students and faculty about the plan.
  - b. The proposed PDST level for each year of the plan shall be based on demonstrated programmatic needs during the period of the multi-year plan and consistent with the University's commitments to quality, access, inclusion, and affordability. Justification is particularly needed for proposed increases greater than the rate of inflation at the time the multi-year plan is prepared.
  - c. The actual annual PDST levels in the approved multi-year plan shall be considered to have been approved at the time the multi-year plan was approved. A PDST level less than that approved in the multi-year plan shall also be considered to have been approved at the time the multi-year plan was approved. In order to charge a PDST greater than that in the approved plan, a new multi-year plan with the desired PDST in the first year shall be prepared and approved.
  - d. Graduate professional degree programs in the same discipline at different campuses may have PDSTs set at different levels.
  - e. The charging of PDSTs and increases in PDSTs shall not occasion corresponding declines in State support for the professional schools offering the degree programs that charge a PDST.
5. Multi-year plans shall be reviewed and approved within a time frame that supports adequate planning and preparation for both students and their graduate professional degree program.

## **Regents Policy 3103: Policy on Professional Degree Supplemental Tuition\***

*Approved January 21, 1994 Amended July 2007, September 2007, March 25, 2010, November 18, 2010, and July 18, 2012*

- 1 Professional Degree Supplemental Tuition shall be assessed to students enrolled in graduate professional degree programs, as determined by The Regents, to sustain and enhance the quality of the professional schools' academic programs and services.
- 2 Revenue from Professional Degree Supplemental Tuition will remain with the campuses and will not be used to offset reductions in State support.
- 3 The President, in consultation with the Provost, shall submit for the Regents' approval Professional Degree Supplemental Tuition levels from the campuses, within the context of such multi-year plans as the Provost requires for each program.
- 4 The Provost is responsible for ensuring that the leadership of each campus engages in appropriate multi-year planning of Professional Degree Supplemental Tuition increases for each professional degree program in a manner that effectively advances the program's mission and strategic academic plan.
- 5 Each professional degree program shall submit a Professional Degree Supplemental Tuition plan to the Provost, pursuant to a submission schedule communicated to the program by the Provost. At a minimum, the Provost will require a multi-year plan (i) for each program for which Professional Degree Supplemental Tuition is proposed to be newly assessed; (ii) for each program that proposes Professional Degree Supplemental Tuition that exceeds the amount proposed in its most recent multi-year plan; and (iii) for each program, at least every three years. In developing a program's multi-year plan, the following factors are among those to be taken into consideration: the amount of resources required to sustain academic quality at, and enrollments in, the particular professional degree program; the ability of the program to remain competitive with other institutions of similar quality; the cost of education for each specific degree program; the resident and nonresident tuition and fees charged by comparable public and private



institutions for each specific program; and other market-based factors (such as scholarship and grant support) that permit the degree program to compete successfully for students. Within this context, different Professional Degree Supplemental Tuition levels may be set for professional programs in the same discipline at different campuses.

6 Financial aid targeted for students enrolled in professional degree programs is necessary to ensure access to the degree program, and to minimize financial barriers to the pursuit of careers in public service. The Provost is responsible for ensuring that each campus complements its proposed multi-year plans for professional degree programs with financial aid measures, including scholarships, grants and loan repayment assistance programs, to adequately meet these goals. Financial aid sources should be supplemented by an amount equivalent to at least 33 percent of new Professional Degree Supplemental Tuition revenue or by an amount necessary to ensure that financial aid sources are equivalent to at least 33 percent of all Professional Degree Supplemental Tuition revenue. Campuses will regularly evaluate and report on the effectiveness of these financial aid measures.

7 The following conditions are adopted for future Professional Degree Supplemental Tuition increases:

- A Access and inclusion are among the University's core commitments, and student affordability is a vitally important component to a public education system. Any increases in Professional Degree Supplemental Tuition must be justified by programmatic and financial needs, but also must not adversely affect the University's commitment to access, inclusion, and keeping the door open for students interested in pursuing low-paying public interest careers.
- B With this sentiment in mind, if a professional school unit wishes to propose a Professional Degree Supplemental Tuition increase greater than 6 percent or in excess of the percentage increase in Tuition for a given year, it must submit a plan, endorsed by its chancellor, describing academic and/or programmatic reasons for the requested increase and describing policies to ensure or enhance access and inclusion in the face of the rising charges.
- C Each plan should consider the following (including expenditure projections, design parameters, and performance metrics) components:
  - i Front-end financial aid such that needy students are able to pursue

their academic and summer interests without regard to financial considerations.

- ii Loan forgiveness programs (or some equivalent alternative program) for, among others, students interested in pursuing low-paying public service jobs such that their debt from professional school does not unduly restrict their career decision.
- iii A strategy for inclusion of underrepresented groups.
- iv A detailed marketing and outreach plan to explain financial aid and loan forgiveness.

D Each unit's Professional Degree Supplemental Tuition plan shall also include:

- i Assurances that in any program directly supported by State 19900 funds, the total in-state tuition and fees charged will be at or below the total tuition and/or fees charged by comparable degree programs at other comparable public institutions.
- ii Information as to the views of the unit's student body and faculty on the proposed increase. This information may be obtained in a variety of ways ranging from consultations with elected student leaders and faculty executive committees to referenda. The information would be treated as advisory, but The Regents would view more favorably Professional Degree Supplemental Tuition proposals that enjoy the support of a unit's faculty and student body.

E The Provost will provide further guidance and coordination as needed to the campuses and to elements of the Office of the President, and coordinate submission of the Professional Degree Supplemental Tuition proposals to The Regents for annual action. Chancellors will carefully review Professional Degree Supplemental Tuition proposals and the supporting plans concerning financial aid, loan forgiveness, outreach, evaluation, and implementation of corrective measures if needed (such as a Professional Degree Supplemental Tuition rollback, freeze, limit on future increases, or other financial and/or non-financial measures), and forward the Professional Degree Supplemental Tuition proposals as revised to the Office of the President.

- F    Upon request of a professional program, with the concurrence of the Chancellor, the President, in consultation with the Provost, may consider and is authorized to reduce Professional Degree Supplemental Tuition for specific programs as the President deems appropriate and shall report those actions to the Regents.

*\*Nothing in this policy constitutes a contract, an offer of a contract, or a promise that any tuition or fees ultimately authorized by The Regents will be limited by any term or provision of this policy. The Regents expressly reserve the right and option, in its absolute discretion, to establish tuition or fees at any level it deems appropriate based on a full consideration of the circumstances, and nothing in this policy shall be a basis for any party to rely on tuition or fees of a specified level or based on a specified formula.*

## **Regents Policy 3104: Principles Underlying the Determination of Fees for Students of Professional Degree Programs\***

*Approved March 15, 2007 Amended March 25, 2010 and July 18, 2012*

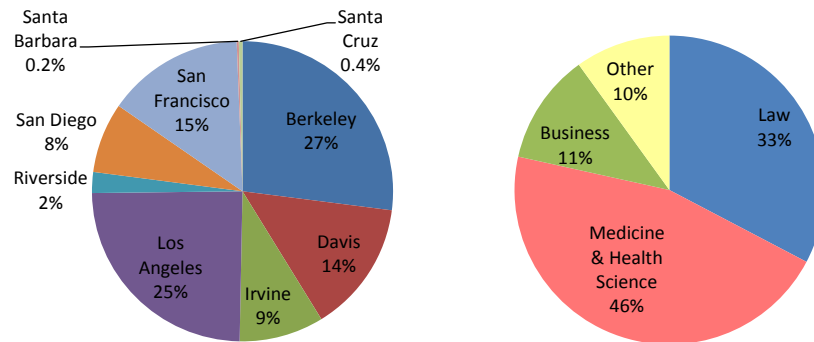
- 1 The Regents approve professional school fees according to such multi-year plans as the Provost requires for each program.
- 2 The Regents adopt the principle that different professional programs in the same discipline at different campuses may have fees set at different levels; and that in doing so, The Regents confirm the commitment to maintaining a single fee level for in-state undergraduate students for all campuses across the system, a single fee level for out-of-state undergraduate students for all campuses across the system, a single fee level for in-state graduate academic students for all campuses across the system, and a single fee level for out-of-state graduate academic students for all campuses across the system.
- 3 It is the policy of The Regents that State support for professional schools should not decline, in the event that professional differential fees increase.
- 4 The Regents endorse the critical importance of campus plans for targeted financial aid for students in professional degree programs to assure access and to minimize financial barriers to the pursuit of careers in public service; The Regents charge the Provost with ensuring that each campus complements its proposed professional degree fee policies with such financial aid measures, including scholarships and loan forgiveness; and that the effectiveness of such programs be evaluated regularly.
- 5 The Regents charge the Provost with ensuring that the leadership of each campus designs its proposed professional degree fees in a manner that effectively advances the mission and strategic academic plan of each program.

*\*Nothing in this policy constitutes a contract, an offer of a contract, or a promise that any fees ultimately authorized by The Regents will be limited by any term or provision of this policy. The Regents expressly reserves the right and option, in its absolute discretion, to establish fees at any level it deems appropriate based on a full consideration of the circumstances, and nothing in this policy shall be a basis for any party to rely on fees of a specified level or based on a specified formula.*

## Overview of PDST Programs

- Over 90% of students enrolled in UC's graduate professional degree programs are assessed Professional Degree Supplemental Tuition (PDST) in addition to other students charges.
- Since the establishment of the PDST Policy, the number of programs that assess PDST has grown from 18 programs in five disciplines in 1994 to 66 programs in 39 disciplines in 2016.
- In 2015-16, PDST is expected to have generated approximately \$260 million in revenue. PDST level for a resident student ranged from \$4,200 to \$40,476 and for a nonresident student ranged from \$4,200 to \$32,004, depending on the graduate professional degree program. PDST revenue remains on campus for use by the program that generated it.
- Display 1 depicts PDST revenue distribution across the system and by discipline. The Merced campus has no PDST programs. PDST programs at the Berkeley and Los Angeles campuses collectively generate about half of all PDST revenue. Close to one-half of the revenue generated by all nine campuses combined supports programs in Medicine and other Health Sciences disciplines, one-third supports Law programs, and the remaining one-fifth supports Business and all other PDST programs.

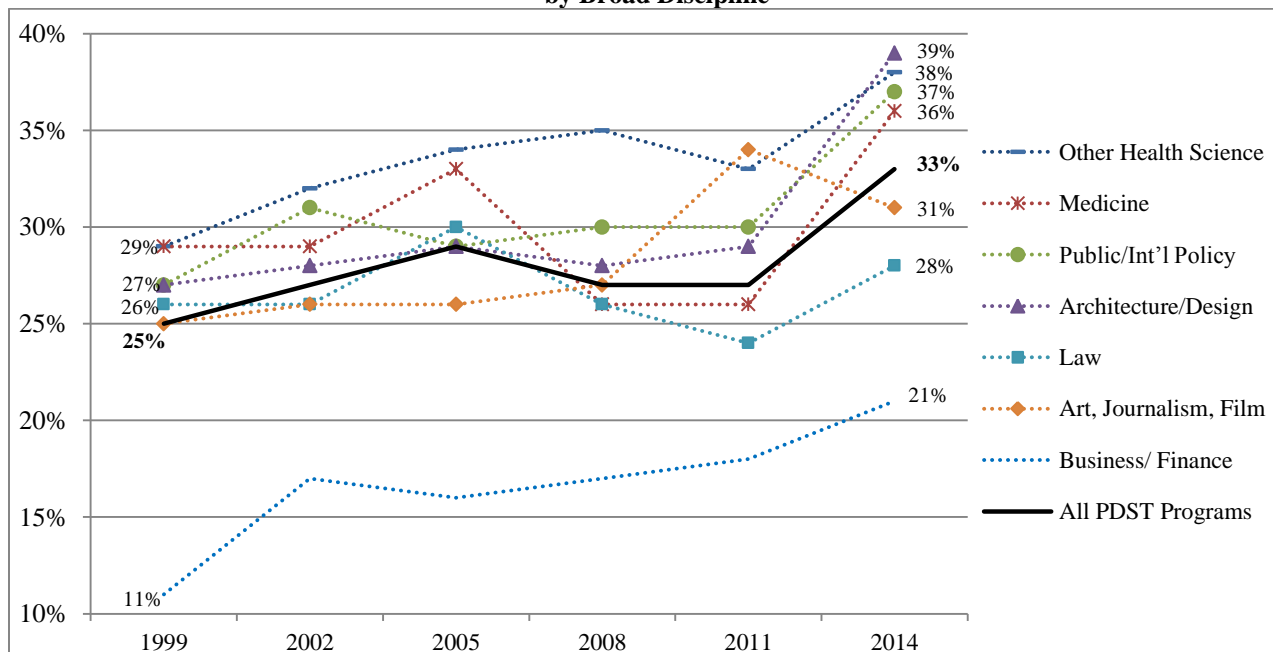
**Display 1: Estimated PDST Revenue by Campus and Broad Discipline, 2015**



Source: UC Corporate Student System

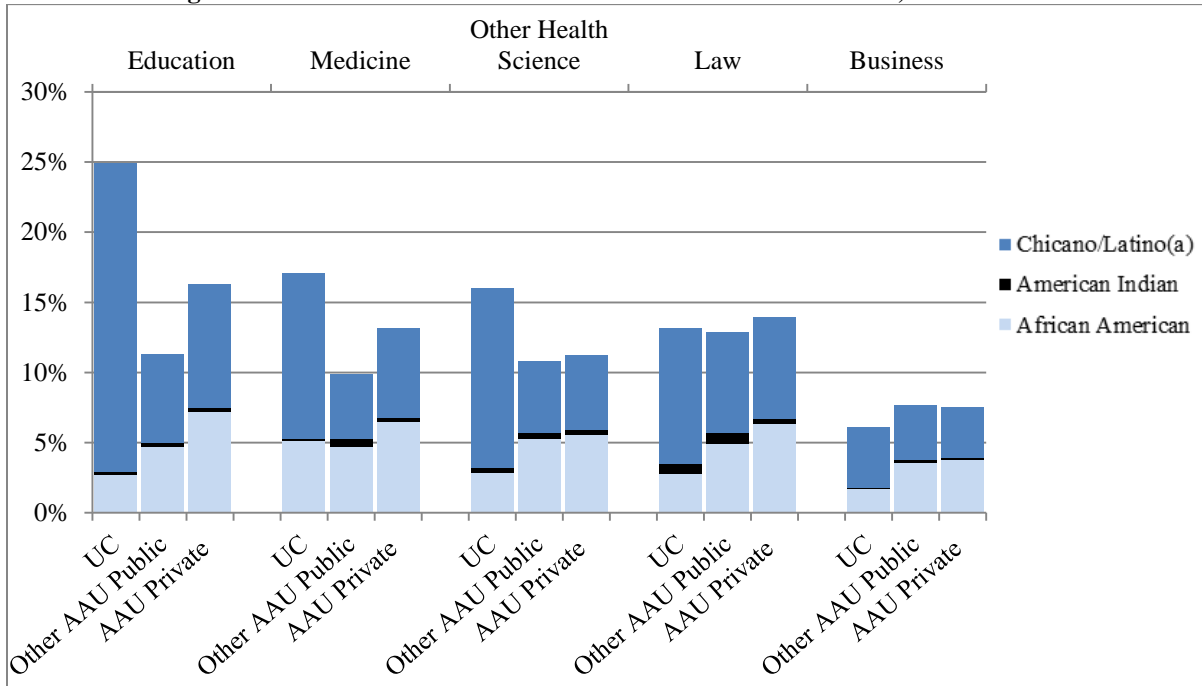
- Display 2 shows 15-year trend data on first-year domestic students who are in PDST programs and who received Pell Grants as undergraduates. Pell Grant recipients generally come from families with incomes of \$60,000 or less. In 2014, a third of all first-year domestic students that paid PDST received Pell Grants as undergraduates, compared to a quarter in 1999.

**Display 2: Percentage of First-Year Domestic Students in PDST Programs with Pell Grants as Undergraduates by Broad Discipline**



Compiled by UCOP Student Financial Support

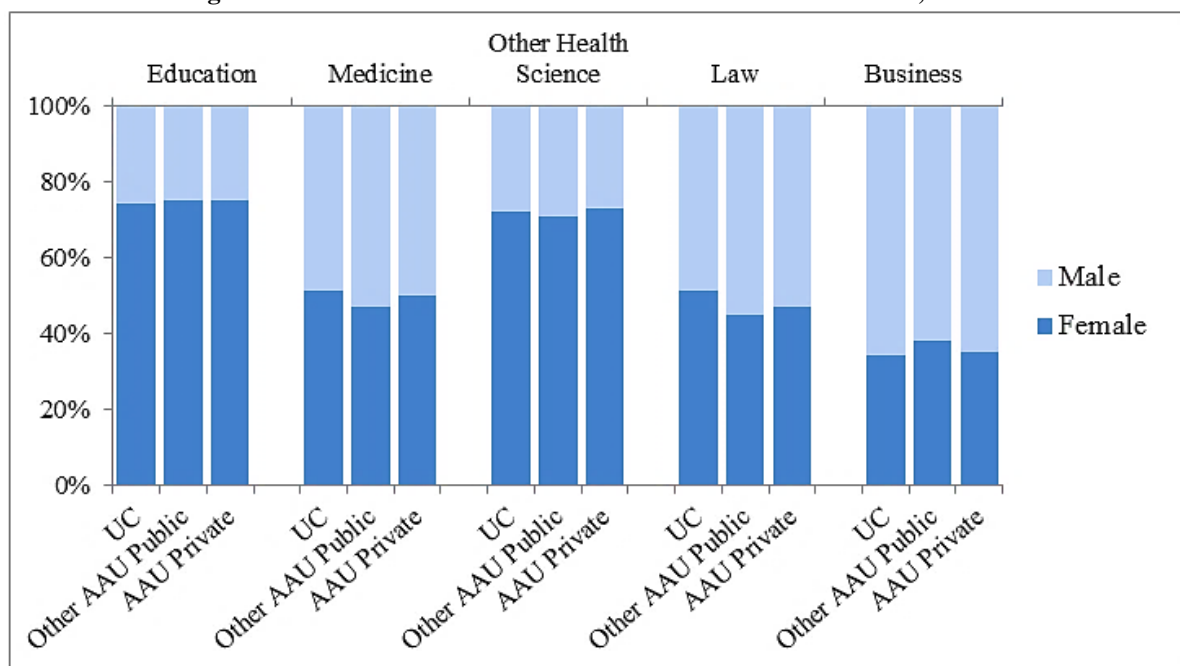
**Display 3: Percentage of Underrepresented Students Receiving Graduate Professional Degrees at UC and at Other AAU Public and Private Universities, 2013-14<sup>1</sup>**



Source: IPEDS

- For UC graduate professional programs in Law, Education, and Medicine, the proportion of students from underrepresented groups has grown by 7%, 10%, and 4%, respectively, since 1999.
- Display 4 depicts the percentage of men and women who received graduate professional degrees in five disciplines at UC and at other AAU public and private universities in 2013-14. While the gender distribution of graduate professional degree recipients varies by discipline, it is relatively consistent across institutions. For example, women represent about 70% of the student populations in Education and Other Health Sciences, and about 30% of the student populations in Business. These enrollment patterns have remained relatively consistent at UC since 1999.

**Display 4: Percentage of Men and Women Receiving Graduate Professional Degrees at UC and at Other AAU Public and Private Universities, 2013-14**



Source: IPEDS

<sup>1</sup> Underrepresented student enrollment figures for UC Medicine and Other Health Sciences programs may be understated due to data limitations.

- California resident students who graduate from UC's PDST programs typically remain in California after graduation. Specifically, over 80% of California residents who graduate from UC's Nursing programs and over 65% of California residents who graduate from UC's Pharmacy, Optometry, Law, Business, and Veterinary Medicine programs remain working in California five years after graduating. While domestic nonresident graduates of PDST-charging programs typically leave California within five years of earning their degrees, about 60% of those graduating with degrees in Nursing and Medicine remain working in the state five years post-graduation; see Display 5.

**Display 5: Proportion of PDST Program Graduates Employed in California Five Years after Graduation<sup>2</sup>**

PDST Program	CA Residents	Domestic Nonresidents
Applied Econ. and Finance	75%	*
Business	69%	58%
Dentistry	52%	27%
Environmental Design	67%	*
Law	66%	46%
Medicine	53%	57%
Nursing	82%	60%
Optometry	73%	25%
Pharmacy	71%	55%
Public Health	62%	36%
Public Policy	67%	25%
Social Welfare	20%	0%
Theater, Film, and TV	67%	65%
Veterinary Medicine	68%	38%

Source: California Employment Development Department quarterly wage data and UCOP student data.

- In fall 2015, approximately 80% of students in PDST programs were California residents; the remaining 20% were domestic nonresident and international students, in roughly equal numbers. Among first-year PDST students, 38% were domestic nonresident and international students. California residents represent the majority of students in programs in Education, Law, Public Policy, and the Health Sciences (over 90% of students in Dentistry, Medicine, Nursing, Optometry, and Pharmacy programs are California residents). By contrast, Science, Technology, and Engineering PDST programs, whose enrollment reflects about 10% of the total PDST population, tend to enroll a greater proportion of international students.

<sup>2</sup> Figures reflect graduating cohorts from 2006 through 2012. International students are excluded because the Employment Development Department (EDD) primarily collects data on domestic students. Because EDD data exclude both self-employed workers and federal employees working in California, the figures shown understate the percentage of PDST program graduates who remain in California five years after graduation.

Professional Degree Supplemental Tuition (PDST) Work Group Members and  
Plan for Soliciting Feedback on Proposed Revised PDST Policy  
October 31, 2016

PDST Work Group Members

- Aimée Dorr, Provost and Executive Vice President for Academic Affairs, UCOP (Chair)
- David Alcocer, Interim Associate Vice President for Budget Analysis and Planning, UCOP (Member)
- Jim Chalfant, Academic Senate Chair (Member)
- Jerlena Griffin-Desta, Executive Director for Student Services and Deputy to the Vice President of Student Affairs, UCOP (Member)
- Pamela Jennings, Director of Graduate Studies, UCOP (Member)
- Cathryn Nation, Associate Vice President of UC Health, UCOP (Member)
- Teresa Olcomendy, Assistant Dean, School of Global Policy and Strategy, UC San Diego (Member as of 10/13/16)
- Marcela Ramirez, Student Regent (Member)
- Lydia Yu, Coordinator of UC Health, UCOP (Member)
- Kate Glassman, Project Policy Analyst, Budget Analysis and Planning, UCOP (Staff)
- Helen Shui, Project Policy Analyst, UC Health, UCOP (Staff)

Plan for Soliciting Feedback on Proposed Revised PDST Policy

People to Whom Provost Dorr's Request Is Addressed

- Chancellors
- Academic Senate Chair
- President's Advisory Group Members

People Copied on Provost Dorr's Request

- Executive Vice Chancellors/Provosts
- Graduate Deans
- Vice Presidents/Vice Provosts in UCOP Division of Academic Affairs
- Vice Chair of the Academic Senate Shane White
- Executive Director of the Academic Senate Hilary Baxter
- Chief of Staff to the President Seth Grossman
- Chief of Staff to the Provost Anne Jones
- PDST Work Group Members

Recipients of Provost Dorr's Request As Conveyed by Deputy to the Vice President for Student Affairs

Jerlena Griffin-Desta

- UC Student Association President Ralph Washington, Jr.
- Council of Student Body Presidents Co-Chairs

Recipients of Provost Dorr's Request As Conveyed by Director of Graduate Studies Pamela D. Jennings

- Student leaders representing active PDST programs will be surveyed

Recipients of Provost Dorr's Request As Conveyed Separately by Provost Aimée Dorr

- Campus academic leaders responsible for graduate professional degree programs currently charging the PDST (copied to Executive Vice Chancellors/Provosts)



## MODEL COMMUNICATION

The University invites comments on a proposed revised Regental policy governing Professional Degree Supplemental Tuition (PDST).

The proposed revised policy would incorporate *Regents Policy 3104: Principles Underlying the Determination of Fees for Students of Professional Degree Programs* into a revision of *Regents Policy 3103: Policy on Professional Degree Supplemental Tuition*.

To support the review the following materials are provided:

- October 31, 2016 letter from Provost Dorr requesting facilitation of review of proposed revision to *Regents Policy 3103: Policy on Professional Degree Supplemental Tuition*
- Model communication
- Briefing on Proposed Revision of Regents Policies Addressing Professional Degree Supplemental Tuition
- Proposed revised *Regents Policy 3103: Policy on Professional Degree Supplemental Tuition* (note that a redline version is not included, due to the number and nature of proposed revisions)
- Current *Regents Policy 3103: Policy on Professional Degree Supplemental Tuition*. (<http://regents.universityofcalifornia.edu/governance/policies/3103.html>.)
- Current *Regents Policy 3104: Principles Underlying the Determination of Fees for Students of Professional Degree Programs* (<http://regents.universityofcalifornia.edu/governance/policies/3104.html>.)
- Overview of PDST Programs
- PDST Work Group Members and Plan for Soliciting Feedback on Proposed Revised PDST Policy

The proposed revised Regents Policy 3103 affirms that “Any initiation of, or increase in PDST shall be justified by the programmatic and financial needs of the graduate professional degree programs and must be considered in the context of the University’s commitment to access, inclusion, and affordability.” It maintains the multi-year plan and an emphasis on consultation with students and faculty. The main divergences from current PDST policies are as follows:

- a. Regental approval of a multi-year plan for each graduate professional degree program charging PDST
- b. Understanding that approval of the multi-year plan confers automatic approval for a PDST level for each year of the plan that is no higher than that in the approved plan
- c. Emphasis on using several perspectives to provide a strong rationale for the PDST levels proposed in the multi-year plan
- d. Absence of any fixed cap on the PDST level or PDST increase
- e. Use of the percent increase in cost of living as a benchmark but neither a ceiling nor a floor for any proposed annual increase for a PDST

If you have any questions, please contact Provost and Executive Vice President Aimée Dorr; Interim Associate Vice President for Budget Analysis and Planning David Alcocer ([David.Alcocer@ucop.edu](mailto:David.Alcocer@ucop.edu)), or Coordinator in Budget Analysis and Planning Kate Glassman ([Kate.Glassman@ucop.edu](mailto:Kate.Glassman@ucop.edu)). Please send written feedback to Coordinator Glassman, copying Interim Associate Vice President Alcocer. All feedback received by January 20, 2017 will be considered.

Thank you in advance for your thoughtful consideration of the proposed revised Regents Policy 3103.